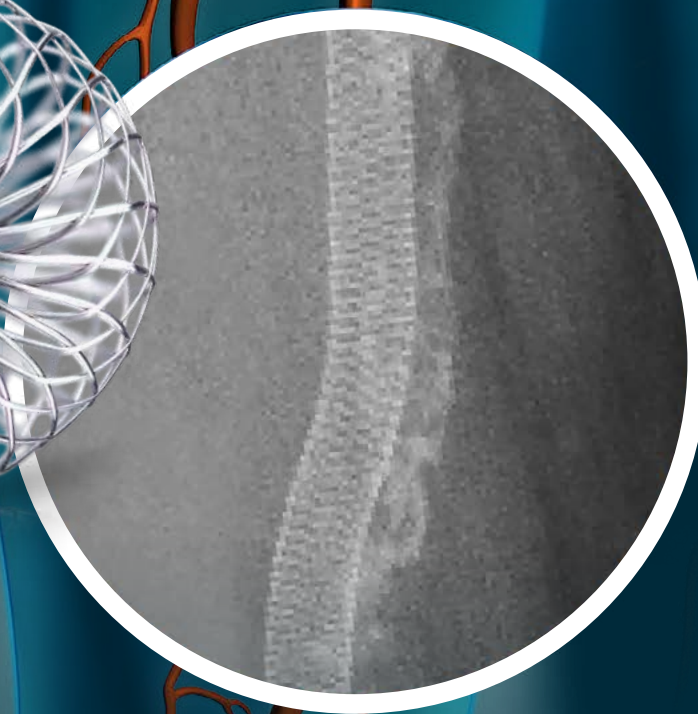


SUPERA

PERIPHERAL STENT SYSTEM

23 p.d Savaime išsiplečiantys didelės radialinės jėgos stentai pakinklio arterijoms



CONQUER THE COMPLEX.

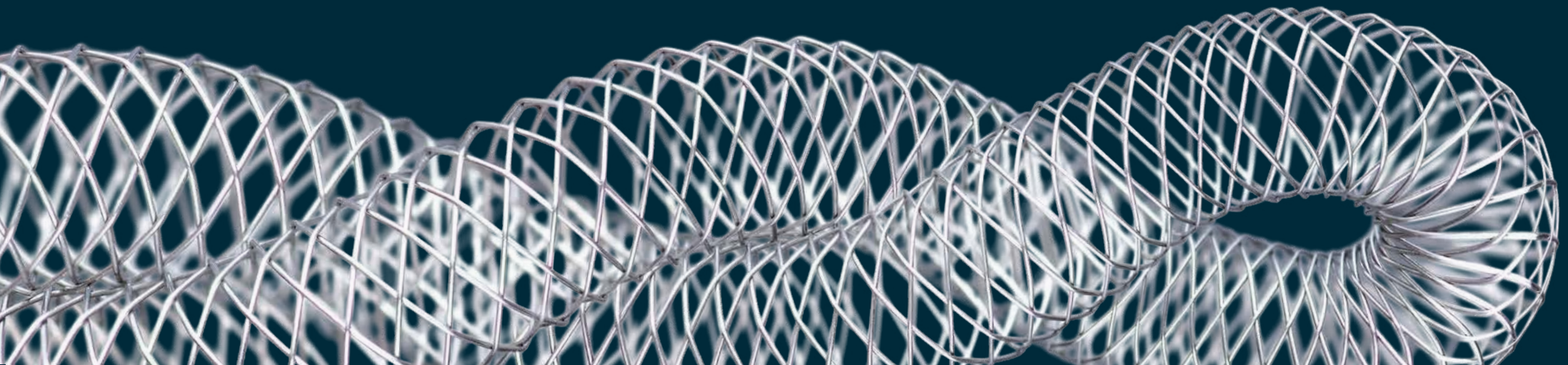
- Mimics the natural structure and movement of the anatomy^{1,2}
- Provides the greatest strength and flexibility for a more durable solution^{3,4}
- Clinically Proven*

VASCULAR


Abbott

A UNIQUE CLASS OF SFA TECHNOLOGY ...

The Supera Vascular Mimetic Implant mimics the anatomy's natural movement, resulting in sustained patency and durable outcomes, even in calcified and long lesions.

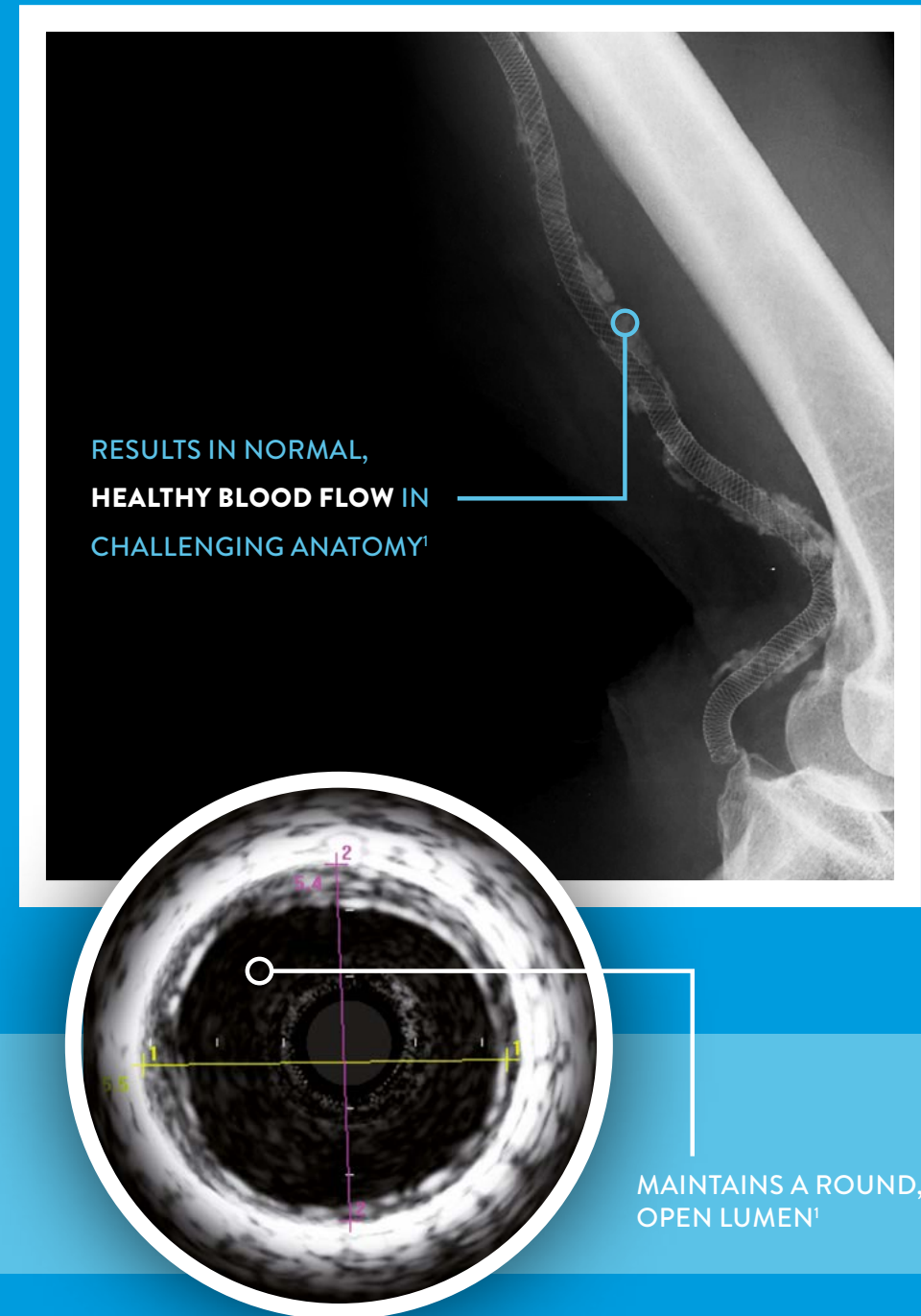


... THAT MIMICS THE NATURAL STRUCTURE AND MOVEMENT OF THE ANATOMY

The natural environment of the SFA and proximal popliteal anatomy is highly dynamic and characterized by twisting, bending, shortening and compression. The native vasculature reacts seamlessly to these forces to maintain unhindered blood flow.

The Supera Vascular Mimetic Implant supports the natural movement of the vessel.

The mimetic design of Supera changes the rules for vessel preparation and sizing, allowing for unique mechanical benefits in a challenging environment.



... WITH THE GREATEST STRENGTH AND FLEXIBILITY^{3,4}

Supera offers the highest levels of both strength and flexibility, minimizing the traditionally required design trade-offs.

Supera provides the strength needed to treat highly calcified lesions – 9 kg of compression resistance – with the lowest chronic outward force.

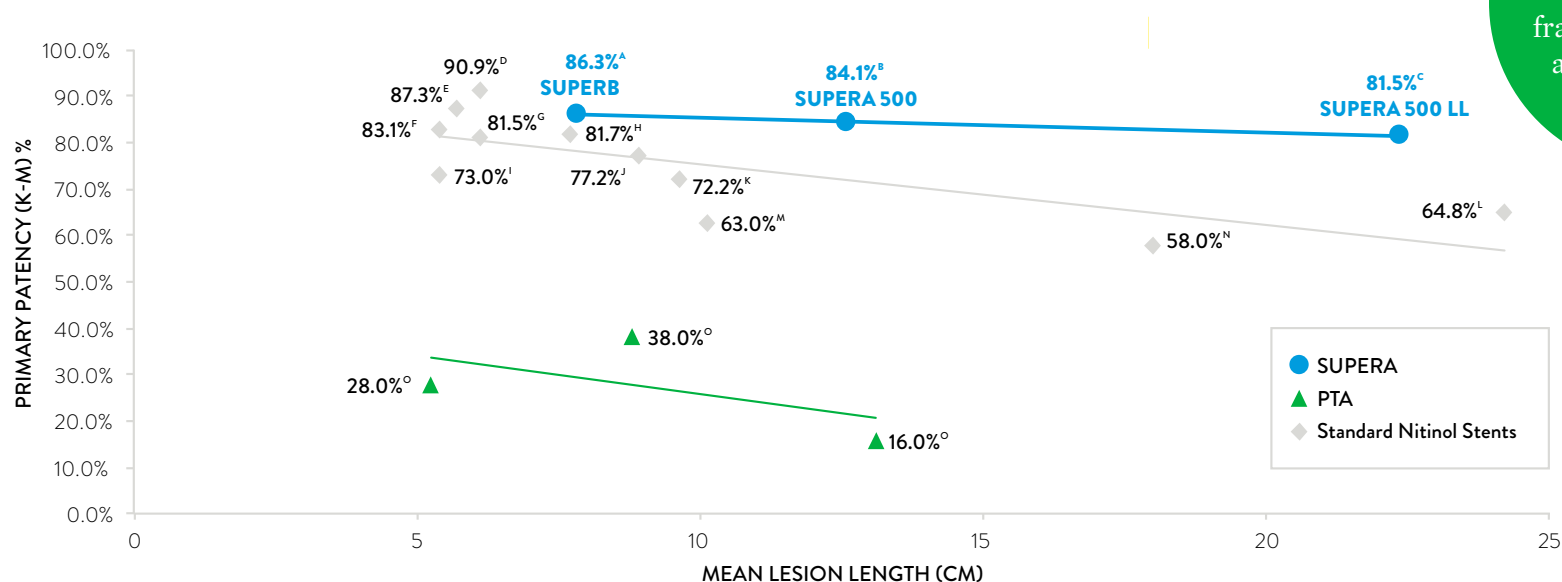


... THAT IS CLINICALLY PROVEN. AGAIN AND AGAIN

The Supera Vascular Mimetic Implant has demonstrated high patency again and again. Supera has been analyzed in 1,400 real-world patients worldwide in the SUPERB pivotal trial and seven retrospective analyses, across the SFA and popliteal arteries, and in patients ranging from claudicants to critical limb ischemia.^{5,6}

Turi bti indikacijos pakinklio arterijos gydymui.

*12-MONTH DATA ACROSS SFA TRIALS BY LESION LENGTH



ZERO

fractures at one year
across all trials^{5,6,7}

86.3%

Patency (K-M) in SUPERB
at 12 months⁹

90.5%

when nominally
deployed^{9,10}

RESULTS FROM CLINICAL TRIALS ARE NOT DIRECTLY COMPARABLE. INFORMATION PROVIDED IS FOR EDUCATIONAL PURPOSES ONLY.

A. Garcia, L., Rosenfield, K., et al. SUPERB Pivotal IDE Trial, 12-Month Results, TCT 2012.

B. SUPERA 500: Schienert, D. Results from the SUPERA 500 Registry. LINC 2013.

C. SUPERA 500 Long Lesions: Schienert, D. Results from the SUPERA 500 Registry. LINC 2013.

D. COMPLETE SE: IFU, Complete SE.

E. Belgian ABSOLUTE: Schroe, H. Absolute BELGIAN study. CIRCE 2008.

F. ZILVER PTX: Dake, M.D., Ansel, G.M., Jaff, M.R., et al. Paclitaxel-Eluting Stents Show Superiority to Balloon Angioplasty and Bare Metal Stents in Femoropopliteal Disease: Twelve-Month Zilver PTX Randomized Study Results. Circ Cardiovasc Interv. 2011;4(5):495-504.

G. RESILIENT: IFU, LifeStent.

H. STROLL: Ansel G. STROLL Trial. LINC 2013.

I. ZILVER PTX (BMS arm): Dake, M.D., Ansel, G.M., Jaff, M.R., et al. Paclitaxel-Eluting Stents Show Superiority to Balloon Angioplasty and Bare Metal Stents in Femoropopliteal Disease: Twelve-Month Zilver PTX Randomized Study Results. Circ Cardiovasc Interv. 2011;4(5):495-504.

J. DURABILITY II: Everflex Instructions for Use.

K. DURABILITY I: Bosiers, M., Torsello, G., Gissler, H.M., et al. Nitinol Stent Implantation in Long Superficial Femoral Artery Lesions: 12-Month Results of the DURABILITY I Study. J Endovasc Ther. 2009;16(3):261-269.

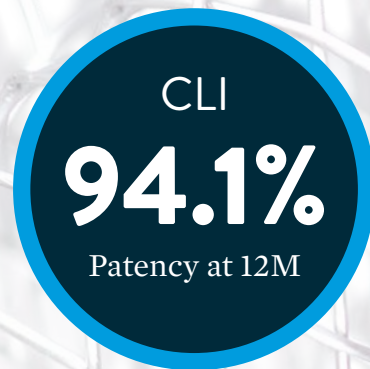
L. DURABILITY 200: Bosiers, M. Durability 200 Study. LINC 2011.

M. Vienna ABSOLUTE: Schillinger, M., Sabeti, S., Loewe, C., et al. Balloon Angioplasty Versus Implantation of Nitinol Stents in the Superficial Femoral Artery. N Engl J Med. 2006;354(18):1879-1888.

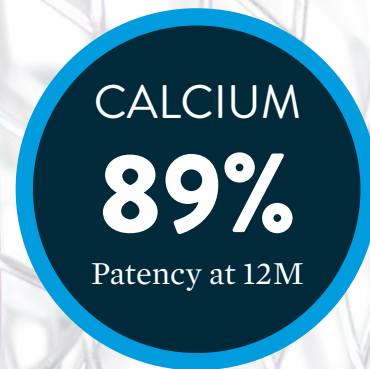
N. VIBRANT (BMS): Ansel G. One-year interim results: Gore VIBRANT clinical study. LINC 2010.

O. Rocha-Singh, K.J., Jaff, M.R., Crabtree, T.R., Bloch, D.A., Ansel, G.; VIVA Physicians, Inc. Performance Goals and Endpoint Assessments for Clinical Trials of Femoropopliteal Bare Nitinol Stents in Patients with Symptomatic Peripheral Arterial Disease. Catheter Cardiovasc Interv. 2007;69(6):910-919.

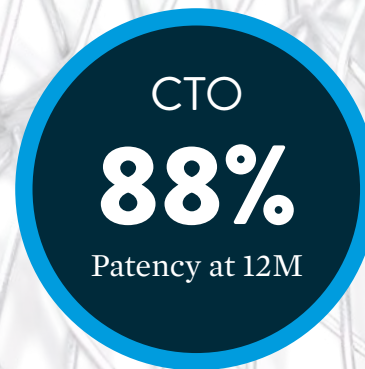
... WITH EXCELLENT CLINICAL RESULTS.



SUPERSUB⁸



SUPERB⁹



SUPERFAST¹⁰



MORE ...

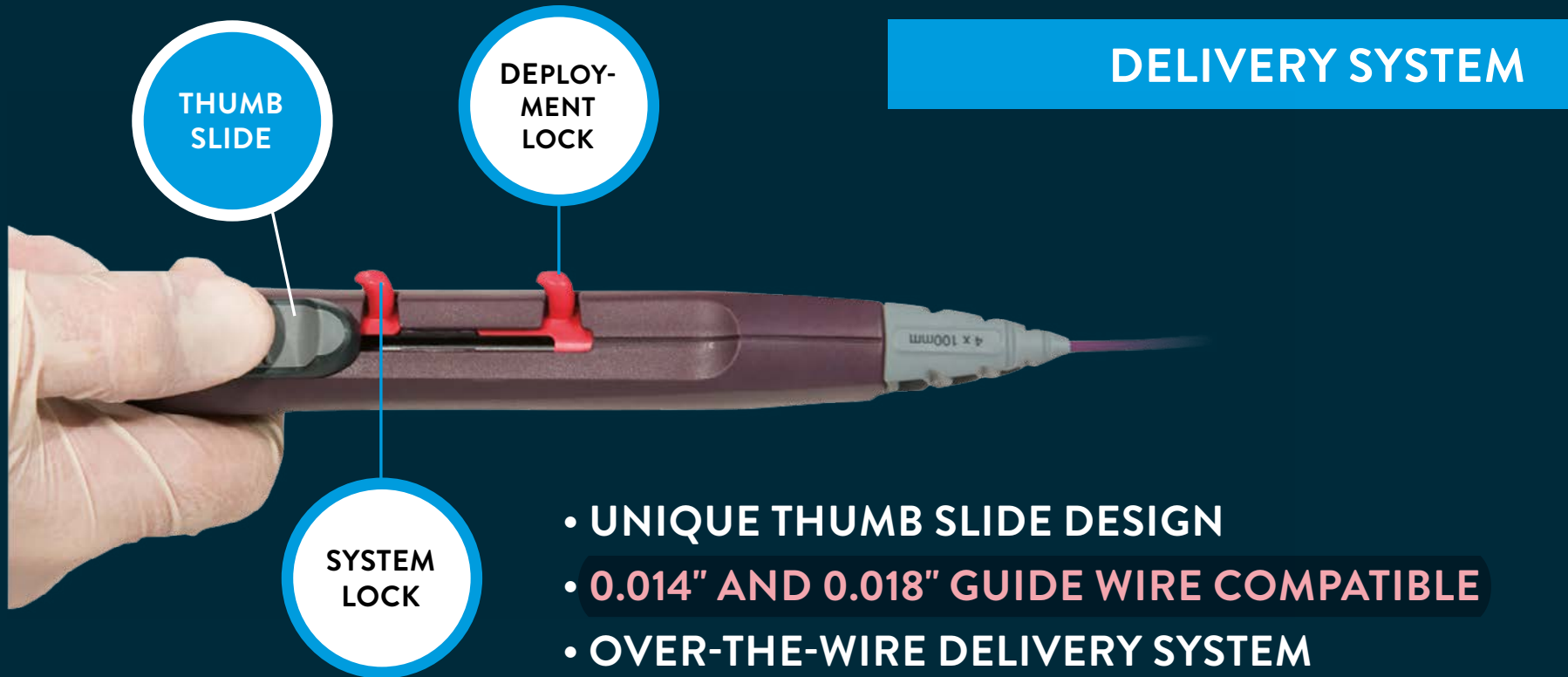
SUPERA ORDERING INFORMATION

	IMPLANT DIAMETER (mm)	IMPLANT LENGTH (mm)									
		20	30	40	60	80	100	120	150	180	200
6F 80cm	4	SE-04-020-080-6F	SE-04-030-080-6F	SE-04-040-080-6F	SE-04-060-080-6F	SE-04-080-080-6F	SE-04-100-080-6F	SE-04-120-080-6F	SE-04-150-080-6F		
	5	SE-05-020-080-6F	SE-05-030-080-6F	SE-05-040-080-6F	SE-05-060-080-6F	SE-05-080-080-6F	SE-05-100-080-6F	SE-05-120-080-6F	SE-05-150-080-6F	SE-05-180-080-6F	SE-05-200-080-6F
	6	SE-06-020-080-6F	SE-06-030-080-6F	SE-06-040-080-6F	SE-06-060-080-6F	SE-06-080-080-6F	SE-06-100-080-6F	SE-06-120-080-6F	SE-06-150-080-6F	SE-06-180-080-6F	SE-06-200-080-6F
	7	SE-07-020-080-6F	SE-07-030-080-6F	SE-07-040-080-6F	SE-07-060-080-6F	SE-07-080-080-6F	SE-07-100-080-6F				
6F 120cm	4	SE-04-020-120-6F	SE-04-030-120-6F	SE-04-040-120-6F	SE-04-060-120-6F	SE-04-080-120-6F	SE-04-100-120-6F	SE-04-120-120-6F	SE-04-150-120-6F		
	5	SE-05-020-120-6F	SE-05-030-120-6F	SE-05-040-120-6F	SE-05-060-120-6F	SE-05-080-120-6F	SE-05-100-120-6F	SE-05-120-120-6F	SE-05-150-120-6F	SE-05-180-120-6F	SE-05-200-120-6F
	6	SE-06-020-120-6F	SE-06-030-120-6F	SE-06-040-120-6F	SE-06-060-120-6F	SE-06-080-120-6F	SE-06-100-120-6F	SE-06-120-120-6F	SE-06-150-120-6F	SE-06-180-120-6F	SE-06-200-120-6F
	7	SE-07-020-120-6F	SE-07-030-120-6F	SE-07-040-120-6F	SE-07-060-120-6F	SE-07-080-120-6F	SE-07-100-120-6F				

23 p.d Savaimė išsiplečiantys didelės radialinės jėgos stentai pakinklio arterijoms

CONQUER THE COMPLEX.

su įvedimo sistema, užtikrinančia tikslų stento išskleidimą ir pozicionavimą.



Skirti darbui tiek su 0,014

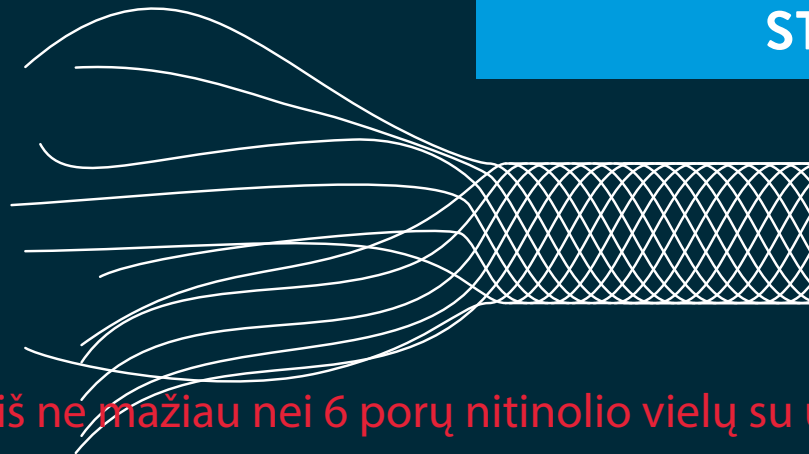
23p.d Savaime išsiplečiantys didelės radialinės jėgos stentai pakinklio arterijoms

CONQUER THE COMPLEX.

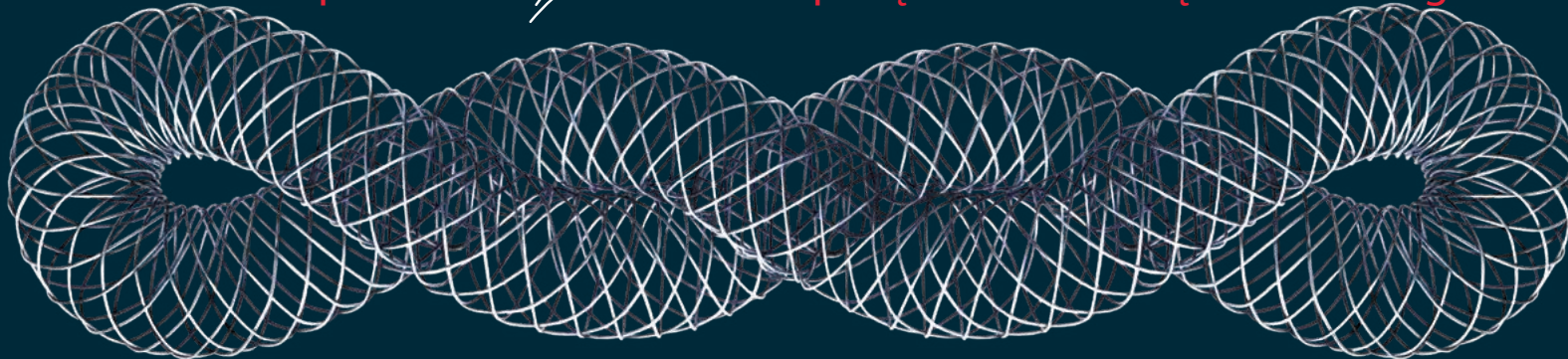
Nitinoliniai



STENT MATERIAL



Dizainas - supintas iš ne mažiau nei 6 porų nitinolio vielų su uždaros gardelės tipo geometrija



A COMPLETE SFA & POPLITEAL PORTFOLIO

ACCESS + CROSS

Hi-Torque
Connect



Hi-Torque
Command

PREPARE

Armada 18



TREAT

Supera



CLOSE

StarClose SE



Perclose
ProGlide



SUPERA, ARMADA, HI-TORQUE, COMMAND, CONNECT, STARCLOSE SE, AND PERCLOSE PROGLIDE ARE REGISTERED TRADEMARKS OF THE ABBOTT GROUP OF COMPANIES. **ZILVER** IS A TRADEMARK OF COOK MEDICAL. **LIFESTENT** IS A TRADEMARK OF C.R. BARD. **EVERFLEX** IS A TRADEMARK OF EV3/COVIDIEN. **COMPLETE SE** AND **MARIS DEEP** ARE TRADEMARKS OF MEDTRONIC, INC. **S.M.A.R.T.** IS A TRADEMARK OF CORDIS CORP, A JOHNSON AND JOHNSON COMPANY. **ASTRON PULSAR** IS A TRADEMARK OF BIOTRONIK, INC. **INNOVA** AND **EPIC** ARE TRADEMARKS OF BOSTON SCIENTIFIC CORP. **MISAGO** IS A TRADEMARK OF TERUMO CORP.

Competitors tested include Complete SE, Astron Pulsar-18, Maris Deep, Innova, Epic, Zilver, EverFlex, LifeStent, Misago, and S.M.A.R.T.

1. Data on file at Abbott Vascular.
 2. Independent lab bench-top testing, data on file at Abbott Vascular.
 3. 9 kg compression resistance for 5 x 100 mm Supera implant to achieve 53% compression. Four times the compression resistance of all other competitors. All other products compressed 53% with less than 2.25 kg applied. Data on file at Abbott Vascular.
 4. Flexibility is defined as kink resistance. The Supera sizes with the lowest kink resistance, as compared to 6.0 x 100 mm standard nitinol stents, are the 5.0 x 100 and 6.0 x 100 mm implants.
 5. Garcia, L., Rosenfield, K., et al., SUPERB Pivotal IDE Trial, 12-Month results, TCT 2012.
 6. Scheinert, et al., Real world perspectives of treating complex SFA-Pop lesions, Results from the SUPERA-500 (including Leipzig SFA, Leipzig Popliteal and S500 LL) Registry, LINC 2013; Goverde, et al., AURORRA registry: Experience with high radial force interwoven nitinol stents in femoro-popliteal arteries, LINC 2013; Molenaar, et al., Interwoven self-expanding nitinol stents for long complex SFA and popliteal lesions CWZ, LINC 2012; Goltz, et al., Endovascular Treatment of Popliteal Artery Segments P1 and P2 in Patients with Critical Limb Ischemia, J Endovasc Ther 2012;19:450-456; Chan, et al., HK Single-centre Results of Femoro-popliteal Revascularization using Helical Interwoven Nitinol Stents, LINC AP 2013; Pacanowski, et al., RESTORE: Interwoven Stents in the Real World, The Initial United States Experience with the Use of the Supera Stent in the SFA and Popliteal Artery, LINC 2013; Kovach, R., SAKE, Supera Interwoven Nitinol Stent Outcomes in Above-Knee Interventions: A Single Center Experience, LINC 2013; Leon, et al., Preliminary Results of the Initial United States Experience with the Supera Woven Nitinol Stent in the Popliteal Artery. J Vasc Surg 2013; 57:1014-22.
 7. Zero fractures at one year across all trials and registries.
 8. Palena, L.M., SUPERSUB Trial: 1-yr outcomes of SUPERA Subintimal stenting in CLI Patients, LINC 2016. 100% CLI patients, 100% diabetics, 100% TASC C/D, mean lesion length 27.9cm.
 9. Garcia, L., The SUPERB Trial 3-year Results, VIVA 2014.
 10. Katsanos, K., SUPERFAST Trial: 1-year results, SUPERA stent vs nitinol stents (propensity matched analysis) for CTOs of the femoropopliteal artery, CIRSE 2016.
- ** When deployed at ±10% of nominal length

Abbott Vascular International BVBA, Park Lane, Culliganlaan 2B, 1831 Diegem, BELGIUM. SUPERB is an Abbott Vascular (IDEV) Sponsored Study. SUPERFAST and SUPERSUB are Investigator Sponsored Studies. Tests performed by and data on file at Abbott Vascular. All drawings are artist's representations only and should not be considered as engineering drawings or photographs. Photo(s) on file at Abbott Vascular. Products intended for use by or under the direction of a physician. Prior to use, reference the Instructions for Use provided inside the product carton (when available) or at eifu.abbottvascular.com for more detailed information on Indications, Contraindications, Warnings, Precautions and Adverse Events. Perclose ProGlide and StarClose SE are subject to prior training requirement as per the Instruction for Use. Information contained herein is for distribution in Europe, Middle East and Africa ONLY. Please check the regulatory status of the device before distribution in areas where CE marking is not the regulation in force. For more information, please contact your local representative or visit our website at abbottvascular.com

© 2017 Abbott. All rights reserved. 2-EH-1-6557-01 01-2017

